

Beta Construction and Production



January 15, 1980
Platform Ellen Installed



January 13, 1981
Ellen First Production



July 8, 1984
Platform Eureka Installed



March 15, 2008
Platform Eureka Returned to Production



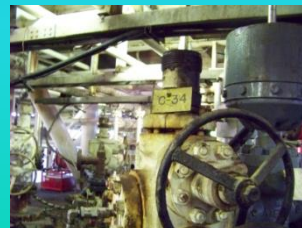
March 12, 1980
Platform Elly Installed.



April 15, 1983
Beta Unit Formed.



March 7, 1985
Eureka First Production



May 15, 2010
Beta Offshore Approved as Operator

